

Allergy & Asthma Network Events



Webinar:

Building the Bridge to
the Next Normal:
COVID-19
Thursday, March 4
4:00 PM – 5:00 PM ET





Webinar:

Asthma, Allergies &
Patient Partnerships
Tuesday, March 9th
3:00 PM – 4:00 PM ET



Virtual Event:

Allergy & Asthma Day
on Capitol Hill
May 4 – 5, 2021

Register for webinars at allergyasthmanetwork.org  News  Webinars



Building the Bridge to the Next Normal: COVID-19

March 17, 2021

OUR SPEAKERS



Dr. Purvi
Parikh



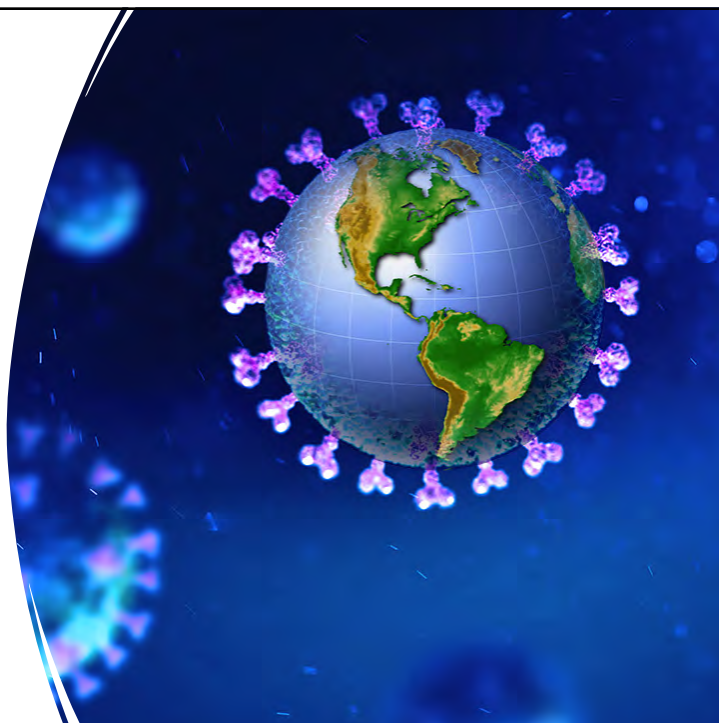
Tonya
Winders

- Clinical Assistant Professor of Medicine NYU Langone School of Medicine & Director, Allergy and Asthma Association, Murray Hill
- National Spokesperson, Allergy & Asthma Network

- President & CEO, Allergy & Asthma Network
- President, Global Allergy & Airways Patient Platform

PROGRAM OUTLINE

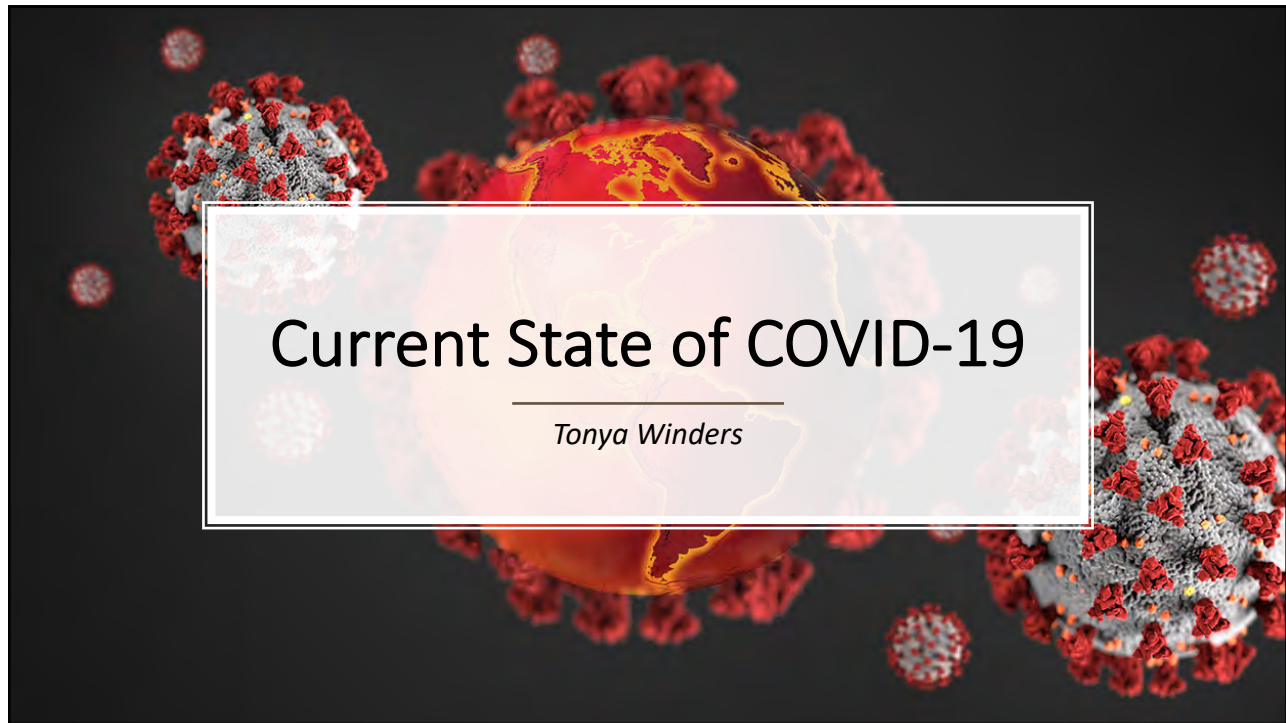
- Current State of COVID-19
- Vaccine Update & Issues
- Building the Bridge to the Next Normal
- Potential Priorities for Public, Private Sector and School Leaders



Poll Question

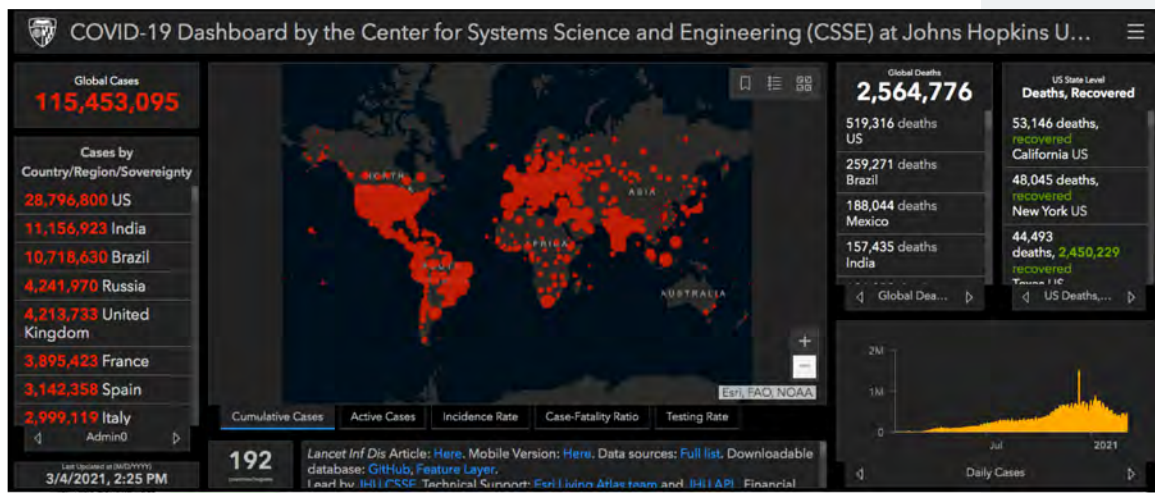


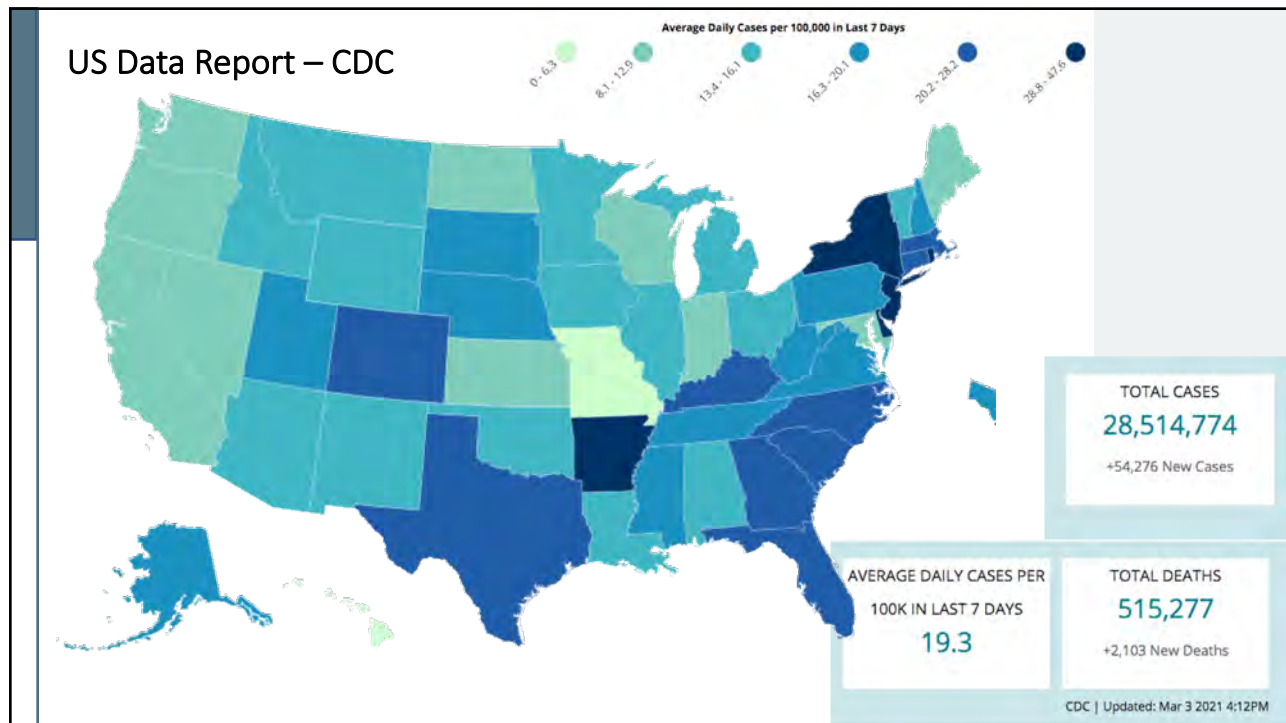
- **We'd like to know who is with us today!**
- **What category best describes you? (we have a limited number of answers or would offer more!)**



Johns Hopkins Global Map

March 4, 2021 – 2:25 PM

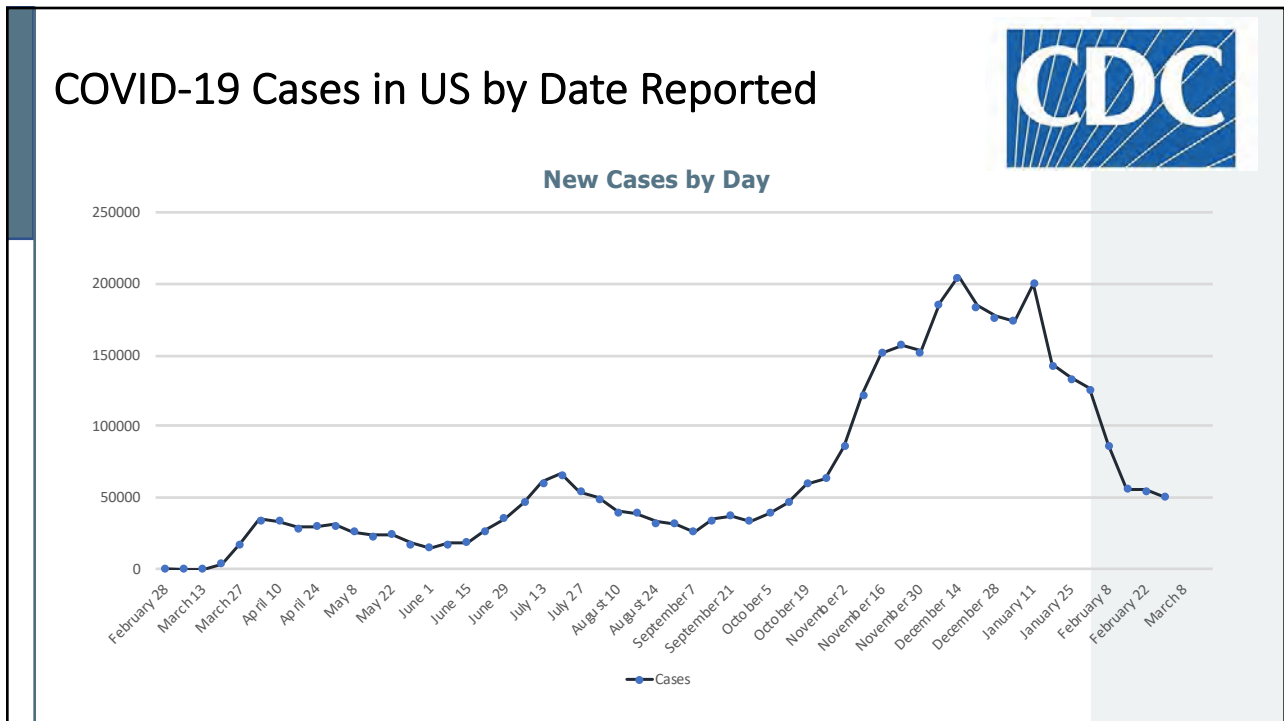
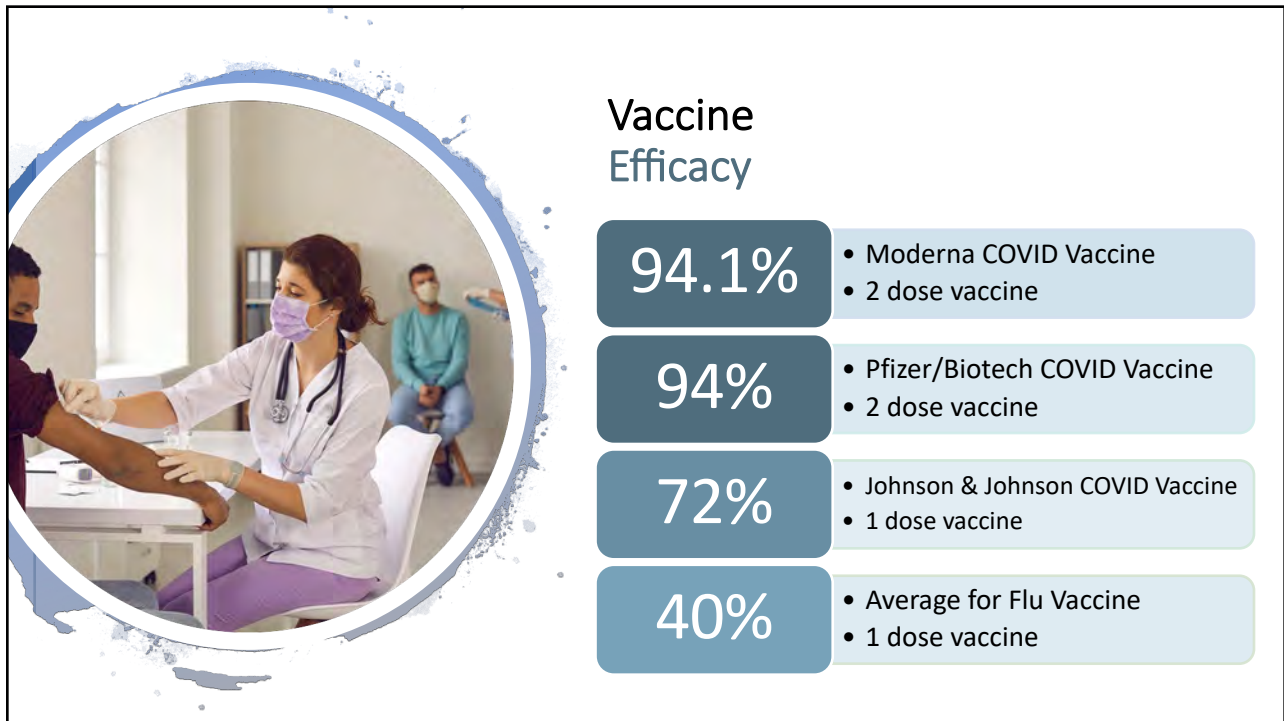




In the News

- Johnson & Johnson vaccine approved for emergency use
 - Available in 24 to 48 hours
 - One shot
 - Shown to be 72% effective
 - J & J has agreed to provide 100 million doses in the US by June – 20 million by the end of March
- Japan lifting state of emergency in some areas
- More new research suggests a single dose of the Pfizer/BioNTech coronavirus vaccine can protect against asymptomatic coronavirus infection, which could help reduce transmission of the virus





Poll Question



- **Have you received a COVID-19 vaccine at this time?**

Vaccine Update & Issues

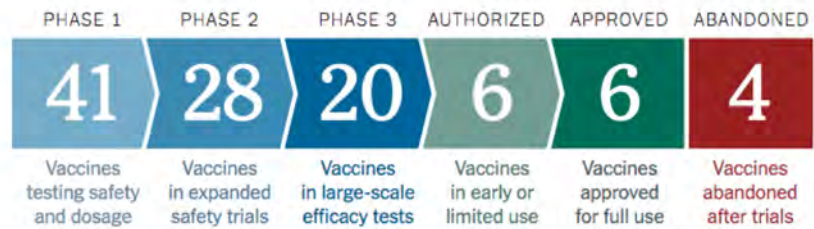
Dr. Purvi Parikh



NY Times Vaccine Tracker

Coronavirus Vaccine Tracker

By Carl Zimmer, Jonathan Corum and Sui-Lee Wee Updated March 2, 2021



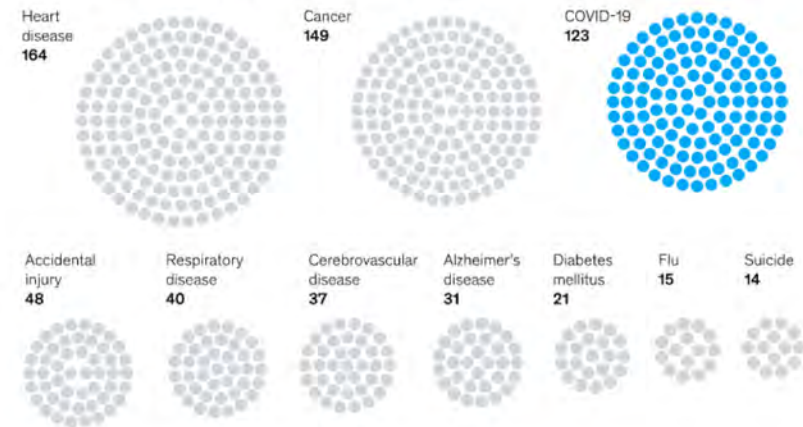
CDC Vaccine Information

Total Vaccine Doses		People Vaccinated	Receiving 1 or More Doses	Receiving 2 Doses
Delivered	107,028,890	Total	52,855,579	26,957,804
Administered	80,540,474	% of Total Population	15.9%	8.1%
Learn more about the distribution of vaccines.		Population ≥ 18 Years of Age	52,807,336	26,939,693
		% of Population ≥ 18 Years of Age	20.7%	10.6%
		Read more about how these data are reported.		
		CDC Data as of: Mar 03 2021 6:00am ET Posted: Mar 3 2021 4:12PM ET		

COVID was a
leading cause of
death in 2020 –
What about 2021
and beyond?

COVID-19 was a leading cause of death in 2020. In 2021 and beyond, it may more closely resemble flu.

Top ten causes of death in the US,¹ number per 100,000 people



¹COVID-19 deaths based on Jan 2020–Jan 2021 data, remainder of data points based on 2019 data.
Source: Centers for Disease Control and Prevention

McKinsey
& Company



Pregnancy & COVID-19 Vaccine

- Pregnant women now enrolled in vaccine trials
- Participants are from the United States as well as Argentina, Brazil, Canada, Chile, Mozambique, South Africa, Spain, and the United Kingdom
- Pregnant women have an increased risk of complications from contracting COVID-19 and are at a heightened risk of developing severe illness

Masks

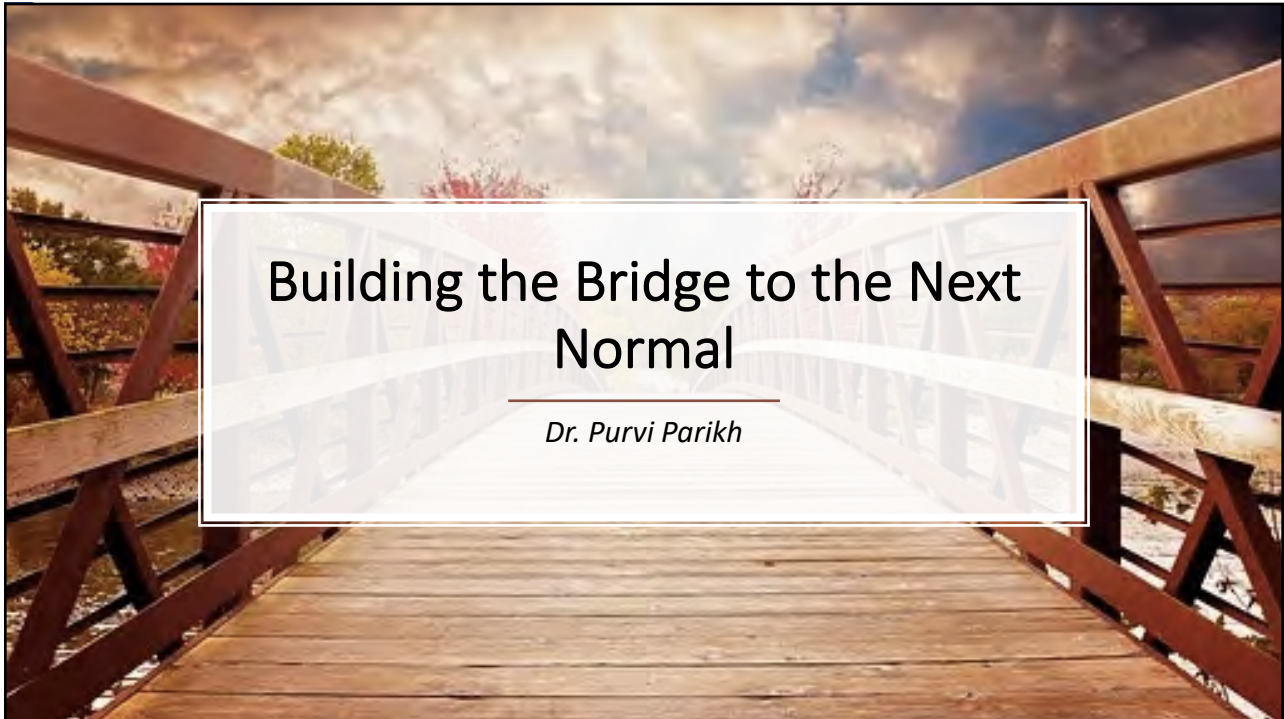
Dr. Anthony S. Fauci”

- “Americans may still be wearing masks outside their homes a year from now”
- Also predicted the country would return to “a significant degree of normality” by Fall
- Encouraged people to stick to the vaccine schedule and get their second shot



Building the Bridge to the Next Normal

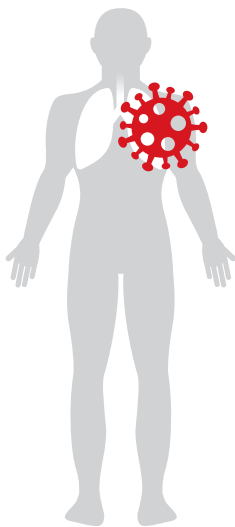
Dr. Purvi Parikh



McKinsey Report

“To America’s leaders, innovators, and changemakers:
Even as the COVID-19 pandemic continues, a return to a
normal existence is in sight.
Getting the endgame right could save thousands of lives.”

COVID-19 in 2021



We hope to see the United States gain a decisive upper hand in the fight against COVID-19

Country is engaged in an unprecedented race to vaccinate as many people as possible

- Still using public health measures to minimize deaths in the short term.

It is reasonable to hope that the first half of 2021 can be a bridge to what we term “normalcy”—when many aspects of social and economic life can resume without fear of excess mortality

McKinsey Report - American 2021: Building a Bridge to Normalcy

COVID-19

THE GOOD NEWS

- Vaccine appears to be effective
- People are getting vaccinated

NOT SO GOOD NEWS

- New challenges every day
- Variant forms of COVID-19
- Issues with the vaccine roll-out

McKinsey Report - American 2021: Building a Bridge to Normalcy

5 Critical Insights from 2020

1

- Containment policy only works if it leads to changes in personal behavior

Public policy ➡ State guidance ➡ Individual decisions & actions

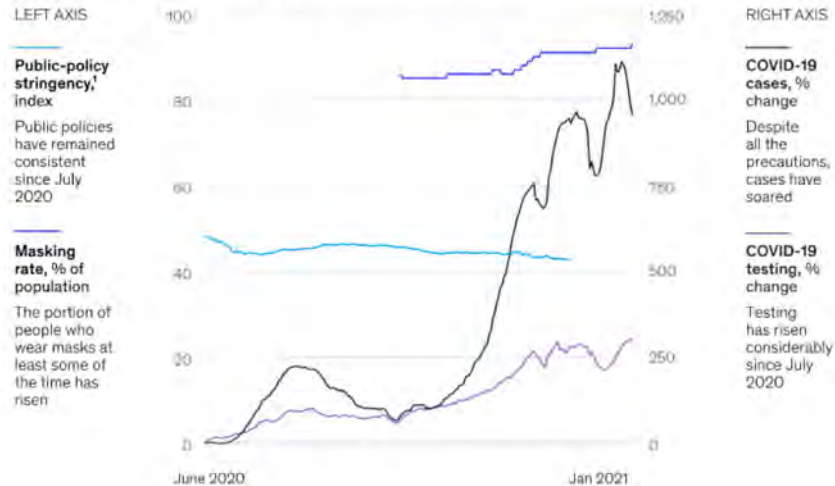
Schools, warehouses, airlines –
Routine & predictable
Essential activities can operate safely

Social gatherings, work settings –
Safeguards not always followed
Transmission disproportionate

McKinsey Report - American 2021: Building a Bridge to Normalcy

COVID-19 cases have grown despite stringent policies and increases in masking and testing.

US public-health measures and cases, July 2020–January 2021



McKinsey's COVID-19 Public Policy Tracker, which monitors restrictions in more than 15 settings and assigns a weighted score based on stringency of measures.
Source: CMU/DePaul Group's COVIDcast survey, accessed through [provisional.covidcast.org](https://www.covidcast.org); COVID Tracking Project; and COVID-19 Tracker, McKinsey.
COVID-19 Public Sector Analytics's Public Policy Tracker

5 Critical Insights from 2020

2

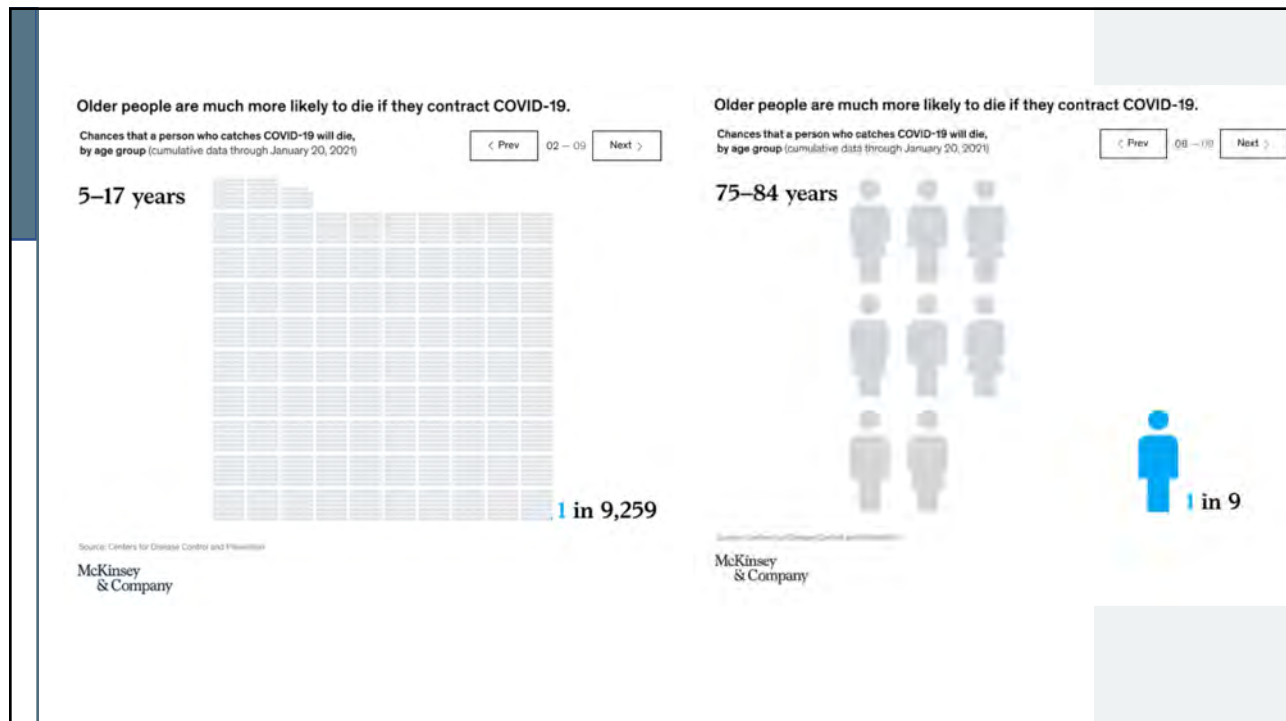
- Mortality is driven by protecting (or not) those most at risk

Persons over 75 ➡ 1,000 times more likely to die from COVID-19 than a 15 year old

Protect the most vulnerable
Before the vaccine – strict isolation
Vaccine – Time-bound problem

Economic supports for older people
in isolation may help sustain them as
we build the bridge

McKinsey Report - American 2021: Building a Bridge to Normalcy



5 Critical Insights from 2020

3

- Simple and sustainable is often better than striving for perfection

Most Americans want to comply with public policies ➡ They are weary

Shifting policies don't help
Often reflect the best new science - hard for people to grasp
In some cases undermine credibility

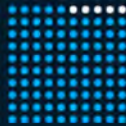
A guideline that is 70 percent effective and is followed by 80 percent of people would probably produce better outcomes than a 90 percent effective guideline that only 10 percent of people follow

McKinsey Report - American 2021: Building a Bridge to Normalcy

Significant portions of UK and US populations are not in compliance with main public-health protocols.

UK and US public-health-measure participation, %

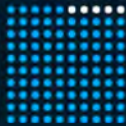
Masks



95%

of Americans wear face coverings at least some of the time

Distancing



95%

of Americans observe at least some physical-distancing guidelines

Testing



36%

of Americans seek testing if symptomatic

Isolation



20%

of Britons attempt to isolate if they test positive

Source: Jenny Cordina, Andrew Ramiah, and George Stein, "COVID-19 consumer healthcare insights: What 2021 may hold," January 2021, McKinsey.com; Behavioural paper supporting the consensus statement on mass testing, Behavioural Team of the Multidisciplinary Task and Finish Group on Mass Testing, September 11, 2020, gov.uk.

McKinsey
& Company

5 Critical Insights from 2020

4

- The public sector can catalyze private-sector innovation

Government + Private sector = Breakthrough innovation

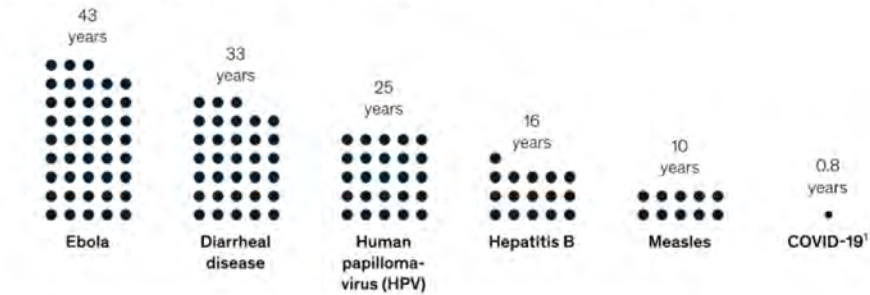
Operation Warp Speed
Sped the vaccine to market

National collaborations have been
more successful than local
collaborations

McKinsey Report - American 2021: Building a Bridge to Normalcy

COVID-19-vaccine development and approval has taken a fraction of the usual time.

Vaccination innovation,¹ time from infectious agent identification to vaccine license in US



¹COVID-19 vaccines have received Emergency Use Approval; they have not yet received Biologic License Application approval.
Source: Semadeni Davidson, Max Rose, and Samantha Vandersloot, "Vaccination," Our World in Data, December 2019, ourworldindata.org; ²COVID-19 vaccines, US Food & Drug Administration, February 5, 2021, [fda.gov](https://www.fda.gov).

McKinsey
& Company

5 Critical Insights from 2020

5

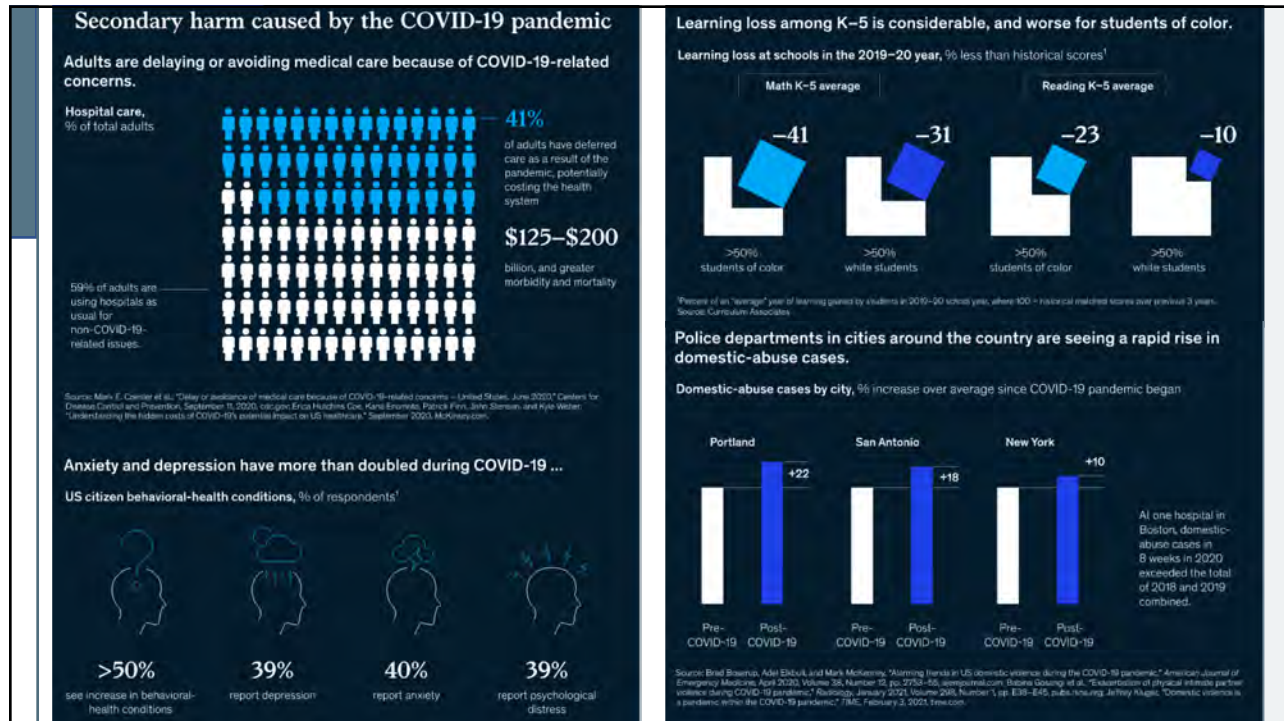
- COVID-19 is a public-health crisis—and much more

COVID-19 – 1st: An infectious disease – and more. . .

Not worrying just about illness
Secondary harm – unemployment,
learning loss, substance-use

The bridge to normalcy needs to be a time when we address not only the underlying issue of SARS-CoV-2 transmission, but also the restoration of our economy and the secondary effects of COVID-19

McKinsey Report - American 2021: Building a Bridge to Normalcy



Potential Priorities for Public, Private Sector & School Leaders

Tonya Winders

Define the endgame, set expectations, boost morale

Additional sacrifice needed by everyone

Identifying an end point will increase hope, resolve

People want to know “When?”

- When can I attend a large wedding? Hug my friends?



McKinsey Report - American 2021: Building a Bridge to Normalcy

Triple down on vaccine adoption

- Most likely return to normalcy ➡



Achieving high vaccine adoption

- Delivering conviction, convenience, and costlessness will require four major shifts in the actions of stakeholders across sectors:
 - Public and private sectors could come together to launch an unprecedented campaign to support vaccine adoption at scale.
 - Government can consider ways to develop and innovate the infrastructure further to support vaccine adoption.
 - Healthcare providers and payers can put vaccination at the top of their agendas.
 - Employers can support employees in their quest to get vaccinated

McKinsey Report - American 2021: Building a Bridge to Normalcy

Prioritize the containment tactics with the highest ROI

- Individual choices matter most
- Government and private-sector leaders can play a significant role in enabling public adoption of this guidance, by offering paid time off, housing supports, employer-led testing and contact tracing, and so on

McKinsey Report - American 2021: Building a Bridge to Normalcy

Go all out to protect those at risk

- Even with improved containment, lives will still be at risk from COVID-19 during the bridge period
- Protect employees who are either at risk personally or live or care for those at higher risk



McKinsey Report - American 2021: Building a Bridge to Normalcy

Create a team to plan for unexpected downside scenarios

- Need to prepared to deal with set-backs and new challenges
 - Variants of the virus
 - Unknown duration of immunity
 - Vaccine safety issues
- Maybe not likely – but we've learned that nothing is impossible!

McKinsey Report - American 2021: Building a Bridge to Normalcy

Poll Question



- **What is the status of school attendance in your area at this time?**
- **(You may choose more than one answer as needed)**

School Impact

Academic Impact

- Early childhood education is dependent on sensory & social experiences
- Not easily replaced at a distance
- Recent research – remote learning will result in considerable learning loss – will have long term effects

US Congress Joint Economic Committee



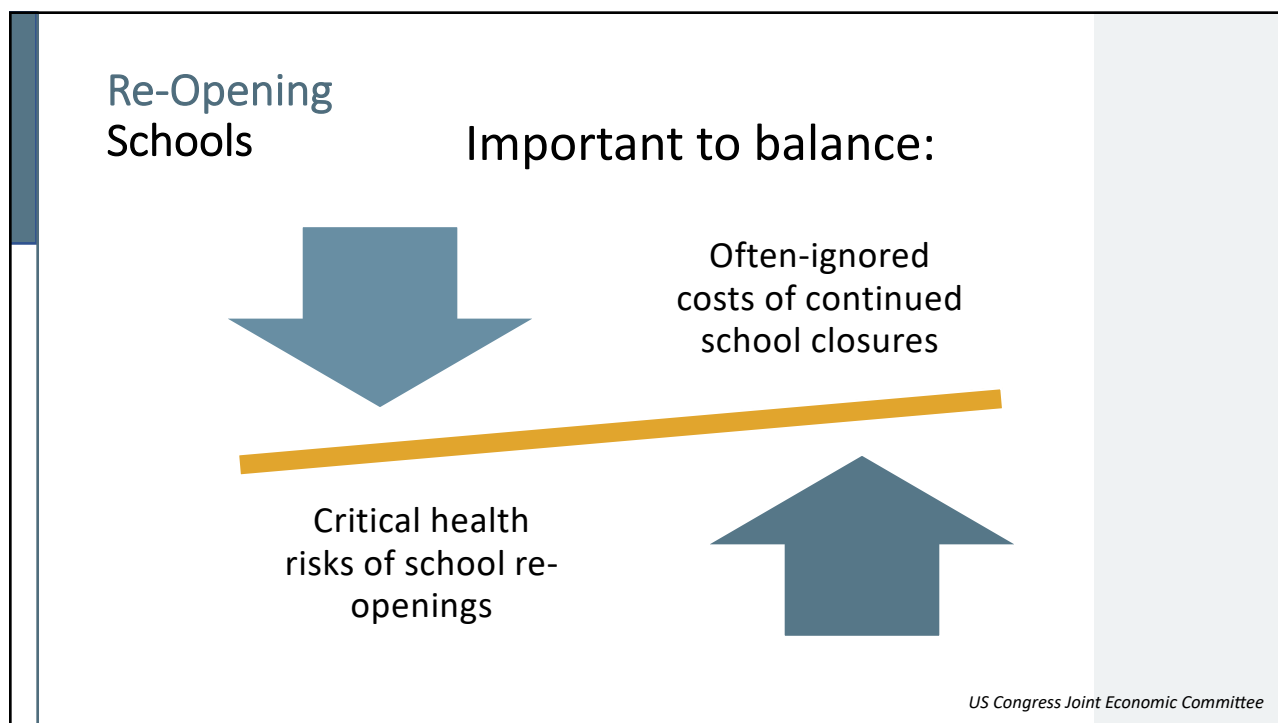
School Impact

Developmental Losses

- Unlikely that distance learning can serve as a suitable replacement for the classroom for young children
- Closing schools separates children from important learning tools used in the classroom
- Children are less likely to learn how to interact with peers and adults without in-person schooling or extracurricular activities such as sports

US Congress Joint Economic Committee





Prepare for the other side of the bridge

- Be prepared for the “Post-COVID-19 World”
- Prepare for transition
- Will we be a “risk-averse society”?
- Will masks be a “forever thing”?
- Are we ready to feel safe?

*Portions from McKinsey Report
America 2021: Building a Bridge to Normalcy*

TIME FOR QUESTIONS



Record your questions in the question box
We'll get to as many as we can!



JOIN US FOR OUR UPCOMING WEBINARs

Breathe Easier: Smoking
Facts and Cessation Tips
- Dr. Todd Mahr

March 25, 2021
4:00 PM ET

FOR MORE INFORMATION

Visit Allergy & Asthma Network at
www.allergyasthmanetwork.org

Want more information on Webinars?
Go to News – then Webinars

