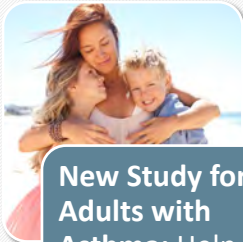


Allergy & Asthma Network News

More information at allergyasthmanetwork.org



New Study for Adults with Asthma: Help Improve Available Treatments

To learn more about the DENALI clinical research study and to find a research site, visit the study website at www.denalystudy.com



Webinar – The Impact of Penicillin Allergy & What We Can Do About It

- **Thursday, November 19th**
- **4:00 PM ET**

Register at allergyasthmanetwork.org – News - Webinars



National Trusted Messengers Project to Address Health Inequities

- Holistic project to address health inequities

Read more at: allergyasthmanetwork.org – News



Vaccines, Social Guidance & Asthma: A Global Glance at COVID-19

*Dr. Purvi Parikh
Tonya Winders*



Our Speakers



Dr. Purvi Parikh

Clinical Assistant Professor of Medicine NYU Langone School of Medicine & Director, Allergy and Asthma Association, Murray Hill

National Spokesperson, Allergy & Asthma Network



Tonya Winders

President & CEO, Allergy & Asthma Network

President, Global Allergy & Airways Patient Platform



Outline

- Current State of COVID – 19
- Vaccine Update
- Global Glance at COVID-19
- Social Guidance – US & the World





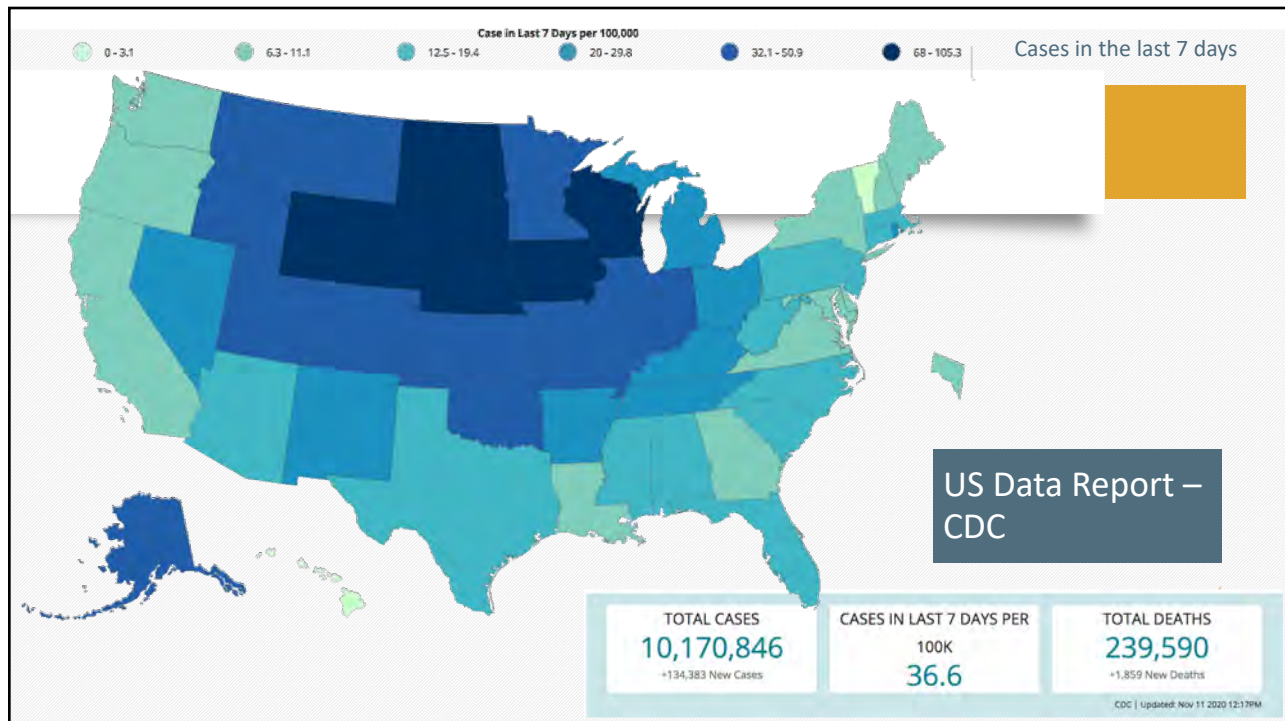
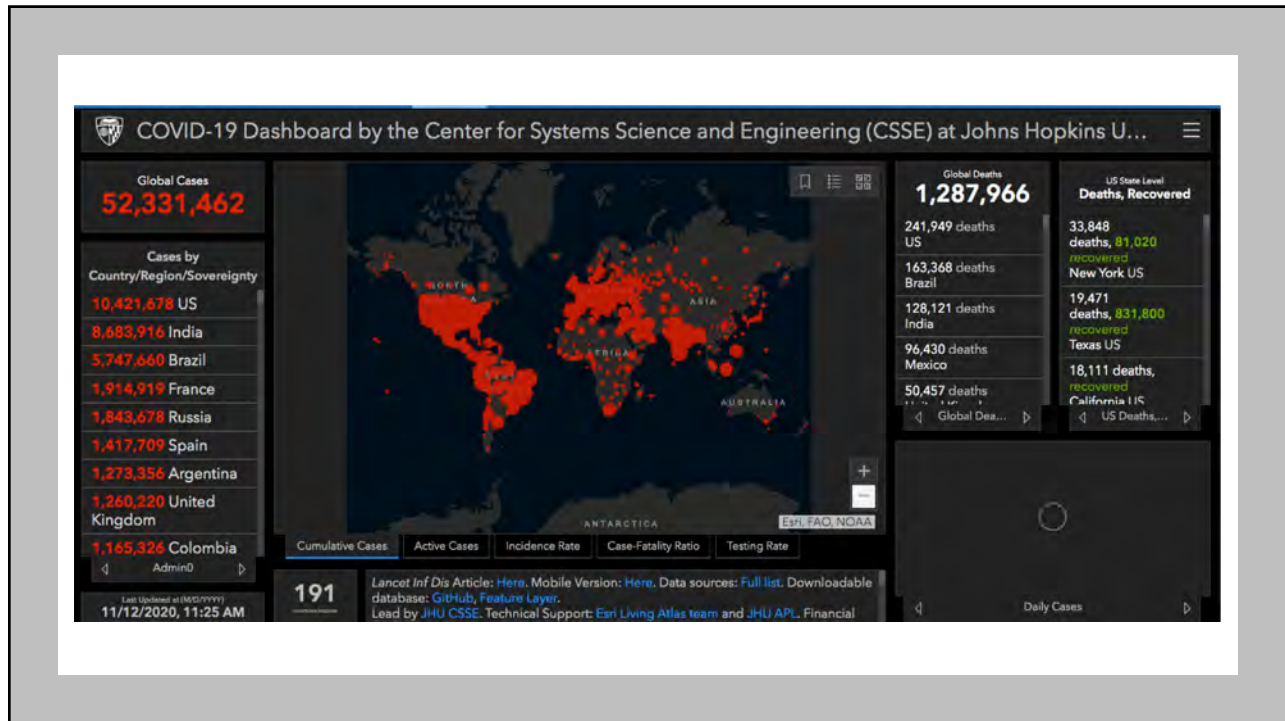
Poll Question

- We'd like to know who is here today.
- Which category best describes you?

A dark blue slide with a sunburst logo in the top left corner. A horizontal bar in the center contains the title 'Current State of COVID-19' in white text. Below the bar, the name 'Tonya Winders' is written in a smaller white font. A small orange triangle is located in the bottom right corner.

Current State of COVID-19

Tonya Winders



In the News

As the United States adds a new coronavirus case every second, hospitals from West Texas to Wisconsin are overwhelmed with the soaring number of critically ill Americans.

- In many cases, it's not a lack of hospital beds, therapies or equipment that worry managers amid the surge, with more than 229,000 deaths from COVID-19 in the U.S. It's the depleted and exhausted hospitals staffs needed to care for those who need life-sustaining treatment



In the News



The U.S. has entered a second round of back-to-school, just as the coronavirus surges around the nation.

- In smaller school districts, careful in-person re-openings in August and September didn't lead to an explosion of COVID-19 cases. And now, the country's largest school systems, which had largely eschewed in-person instruction, are venturing partially back into the classroom.

Concern about college students coming home

- Will they bring the virus with them?

CDC – New Guidance:

- Redefines “close contact”: When a person is within 6 feet of an infectious person over the course of 24 hours.
- Masks may protect you from getting coronavirus – not just protect others when you wear a mask

In the News

Dr. Fauci's Thanksgiving advice:

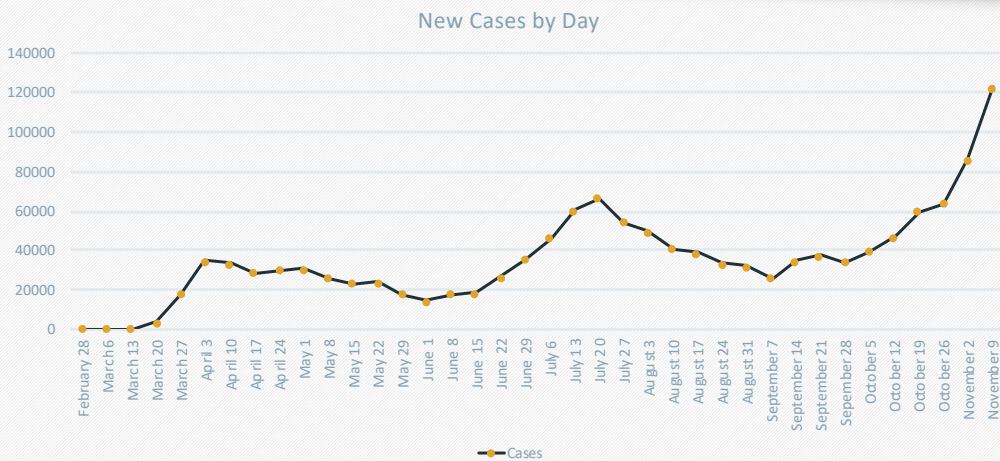
- First, he said it's "understandable" that a lot of us have "traditional, emotional, warm feelings about the holidays and bringing a group of people, friends and family, together in the house indoors."
- "If you have vulnerable people—the elderly or people with underlying conditions—you better consider whether you want to do that now or maybe just forestall it and just wait and say, 'You know, this is an unfortunate and unusual situation and I may not want to take the risk'"

Smaller Thanksgivings leave turkey farmers in limbo

- Anxious turkey farmers and grocers are scrambling to predict what people will want on their holiday tables



COVID-19 Cases in US by Date Reported

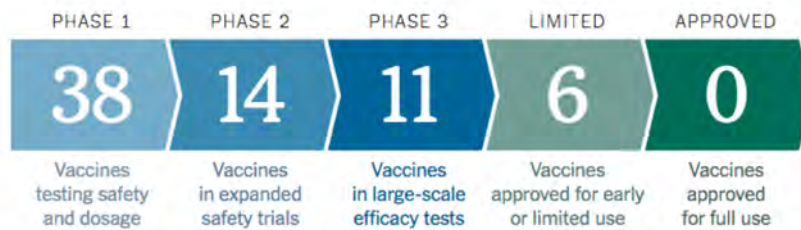




A dark blue slide with a sun icon in the top left corner. A horizontal bar in the middle contains the title "Vaccine Update" in white text. Below the bar, the name "Dr. Purvi Parikh" is written in a smaller white font. A small orange triangle is located in the bottom right corner.

Coronavirus Vaccine Tracker

By Jonathan Corum, Sui-Lee Wee and Carl Zimmer Updated November 11, 2020



<https://www.nytimes.com/interactive/2020/science/coronavirus-vaccine-tracker.html>



Vaccines

Pfizer & BioNTech – Preliminary data

- Coronavirus vaccine over 90% effective
- An analysis of the first 94 cases of Covid-19 in the trial yielded promising preliminary results
- Pfizer is now expected to submit an application for an Emergency Use Authorization by the end of November
- If their vaccine is authorized, Pfizer and BioNTech expect to manufacture over 1.3 billion doses of their vaccine worldwide by the end of 2021
- The vaccine will have to be chilled to minus 80 degrees Celsius (minus 112 degrees Fahrenheit) until it's ready to be injected. Pfizer is designing boxes that will keep the vaccines cold as they're being transported



Vaccines

Moderna

- Moderna is among several firms that joined the president's initiative, which set out to put several manufacturers and pharmaceutical companies in motion with federal financial support to rapidly produce vaccine candidates
- Results from a vaccine in drug trial phase from Moderna, supported by research from the National Institute of Allergy and Infectious Diseases, could be released within weeks



Vaccines

AstraZeneca & Johnson & Johnson

- Testing of AstraZeneca's vaccine candidate had been halted since early September, while Johnson & Johnson's vaccine study was paused at the beginning of last week. Each company had a study volunteer develop a serious health issue, requiring a review of safety data
- The two coronavirus vaccines are among several candidates in final-stage testing, the last step before seeking regulatory approval
- The drugmakers said they got the go-ahead from the Food and Drug Administration to restart tests in the U.S



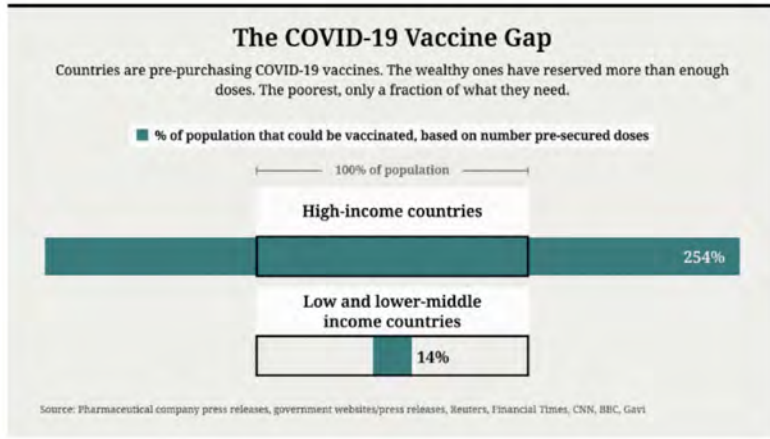
A Three-part Plan to Eliminate COVID-19 - Gates Foundation

Most of the world's supply of COVID-19 vaccines is slated to go to rich countries

- Securing the right to buy billions of doses as soon as they're produced.

Low- and lower-middle income nations of the world - These nations are home to nearly half of all human beings

- They don't have the purchasing power to make big deals with pharmaceutical companies
- As things stand now, these countries will be able to cover, at most, 14 percent of their people.



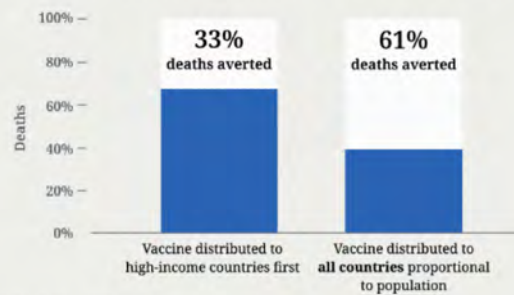
A Three-part Plan to Eliminate COVID-19 - Gates Foundation

2 Scenarios (Northeastern University):

- 1 Vaccines are given to countries based on their population size
- 2 50 rich countries get the first 2 billion doses of vaccine

How Many Lives Could Equitable Vaccination Save?

Modeled Percentage of Deaths (Compared to No Vaccine)



Virus continues to spread unchecked for four months in three quarters of the world. And almost twice as many people die.

A Three-part Plan to Eliminate COVID-19 - Gates Foundation

The only way to eliminate the threat of this disease somewhere is to eliminate it everywhere.

We need to:

- Vastly increase the world's vaccine manufacturing capacity
- Strengthen health systems—the workers and infrastructure that can actually deliver vaccines to people around the world



COVID-19 Vaccine News in Review

Novavax – delayed start of US late-stage trial for a month

Operation Warp Speed:

- The two farthest along are Moderna and Pfizer. Both of their vaccines are based on messenger RNA technology, a technology that injects genetic instructions from the coronavirus into people, and coaxes the recipients' cells into producing proteins that resemble a virus but aren't infections
- AstraZeneca/University of Oxford, Johnson & Johnson, Novavax, and Sanofi/GlaxoSmithKline — are weeks to months behind Moderna and Pfizer.
- Moncef Slaoui said it shouldn't be long before the companies know if the vaccines are working. "Nobody can really say when," he said, "but the expectation would be that this would happen between the month of November and December."



Flu Vaccine

- Routine annual influenza vaccination is recommended for all persons aged ≥ 6 months who do not have contraindications.
- For each recipient, a licensed and age-appropriate vaccine should be used. Inactivated influenza vaccines (IIVs), recombinant influenza vaccine (RIV4), and live attenuated influenza vaccine (LAIV4) are expected to be available.
- Most influenza vaccines available for the 2020–21 season will be quadrivalent, with the exception of MF59-adjuvanted IIV, which is expected to be available in both quadrivalent and trivalent formulations.



Flu Vaccine

- The composition of the 2020–21 U.S. influenza vaccines includes updates to the influenza A(H1N1)pdm09, influenza A(H3N2), and influenza B/Victoria lineage components.
- These updated components will be included in both trivalent and quadrivalent vaccines. Quadrivalent vaccines will include an additional influenza B virus component from the B/Yamagata lineage, which is unchanged from that included in quadrivalent influenza vaccines used during the 2019–20 season.
- Fluzone High-Dose Quadrivalent is approved for use in persons aged ≥ 65 years. For the 2020–21 season, Fluzone High-Dose Quadrivalent is expected to replace the previously available trivalent formulation of Fluzone High-Dose (HD-IIV3).
- Flud Quadrivalent is approved for use in persons aged ≥ 65 years. For the 2020–21 season, both Flud Quadrivalent and the previously licensed trivalent formulation of Flud (aIIV3) are expected to be available.



Flu Vaccine FAQ's

With COVID-19 cases surging, should people be getting flu shots?

- **YES!** Influenza vaccination of persons aged ≥ 6 months to reduce prevalence of illness caused by influenza will reduce symptoms that might be confused with those of COVID-19. Prevention of and reduction in the severity of influenza illness and reduction of outpatient illnesses, hospitalizations, and intensive care unit admissions through influenza vaccination also could alleviate stress on the U.S. health care system.

When should I get a flu vaccine?

- **NOW!** Efforts should be structured to optimize vaccination coverage before influenza activity in the community begins. Vaccination should continue to be offered as long as influenza viruses are circulating and unexpired vaccine is available.



Grohskopf LA, Alyanak E, Broder KR, et al. Prevention and Control of Seasonal Influenza with Vaccines: Recommendations of the Advisory Committee on Immunization Practices — United States, 2020–21 Influenza Season. MMWR Recomm Rep 2020;69(No. RR-8):1–24. DOI: <http://dx.doi.org/10.15585/mmwr.rr6908a1>



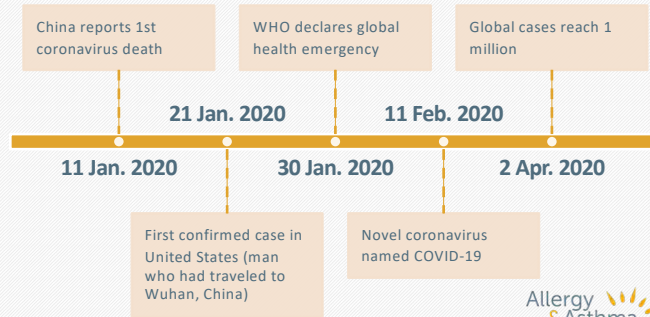
Global Glance at COVID-19

Tonya Winders
President, Global Allergy & Airways Patient Platform

COVID-19 Overview



- Scientists first identified a human coronavirus in 1965
- SARS emerged in southern China in 2002 and quickly spread to 28 other countries
- Virus first detected in Wuhan, China, in late 2019
- SARS-CoV-2 originated in bats & made the jump to humans at one of Wuhan's open-air "wet markets." (where customers buy fresh meat and fish, including animals that are killed on the spot)



Huang C et al. Lancet. 2020 Jan 24

Signs and symptoms				
Fever	40 (98%)	13 (100%)	27 (96%)	0-68
Highest temperature, °C	0-037
<37.3	1 (2%)	0	1 (4%)	..
37.3-38.0	8 (20%)	3 (23%)	5 (18%)	..
38.1-39.0	18 (44%)	7 (54%)	11 (39%)	..
>39.0	14 (34%)	3 (23%)	11 (39%)	..
Cough	31 (76%)	11 (85%)	20 (71%)	0-35
Myalgia or fatigue	18 (44%)	7 (54%)	11 (39%)	0-38
Sputum production	11/39 (28%)	5 (38%)	6/26 (23%)	0-32
Headache	3/38 (8%)	0	3/25 (12%)	0-10
Haemoptysis	2/39 (5%)	1 (8%)	1/26 (4%)	0-46
Diarrhoea	1/38 (3%)	0	1/25 (4%)	0-66
Dyspnoea	22/40 (55%)	12 (92%)	10/27 (37%)	0-0010
Days from illness onset to dyspnoea	8.0 (5.0-13.0)	8.0 (6.0-17.0)	6.5 (2.0-10.0)	0-22
Days from first admission to transfer	5.0 (1.0-8.0)	8.0 (5.0-14.0)	1.0 (1.0-6.5)	0-0023
Systolic pressure, mm Hg	125.0 (119.0-135.0)	145.0 (123.0-167.0)	122.0 (118.5-129.5)	0-018
Respiratory rate >24 breaths per min	12 (29%)	8 (62%)	4 (14%)	0-0023



Comorbidity Rates Seen With COVID-19 Cases

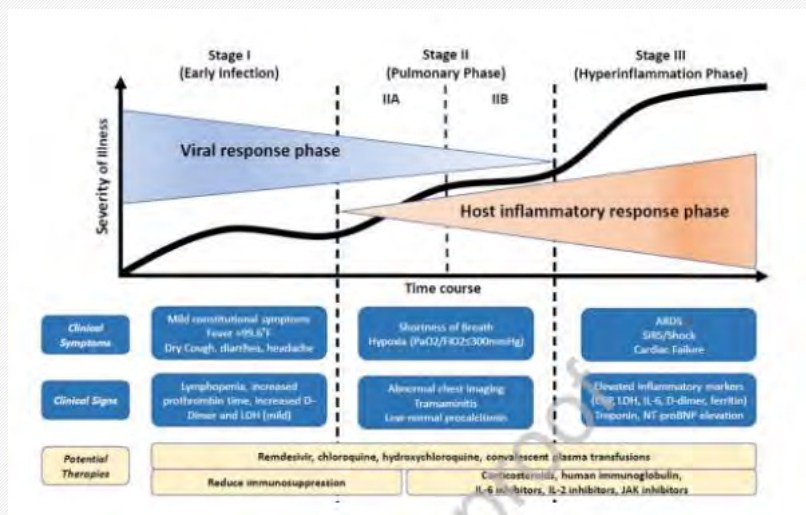


Comorbidity	Rate (%)
Hypertension	30.7
Diabetes mellitus	14.3
Cardiovascular disease	11.9
Cerebrovascular disease	6.6
Malignancy	4.3
Chronic liver disease	2.8
Chronic lung disease	2.4
Chronic kidney disease	2.1
HIV	1.4
Immunodeficiency	0.2



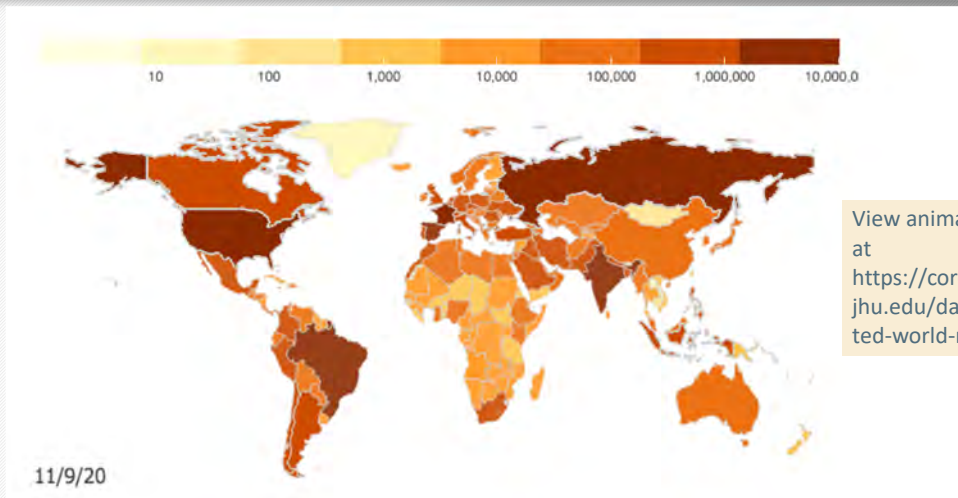
Siordia JA Jr. J Clin Virol. 2020;127:104357.

Staging of COVID-19



Siddiqi HK, et al. J Heart Lung Transplant. 2020 [Epub ahead of print]

Current Outbreak Activity by Country

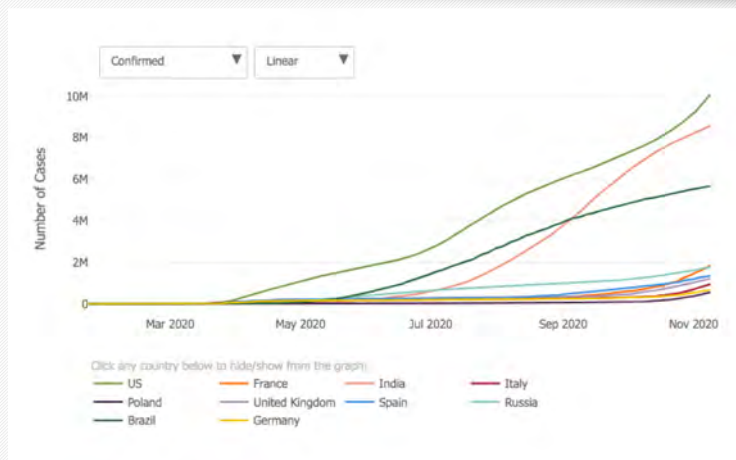


View animated map at <https://coronavirus.jhu.edu/data/animated-world-map>

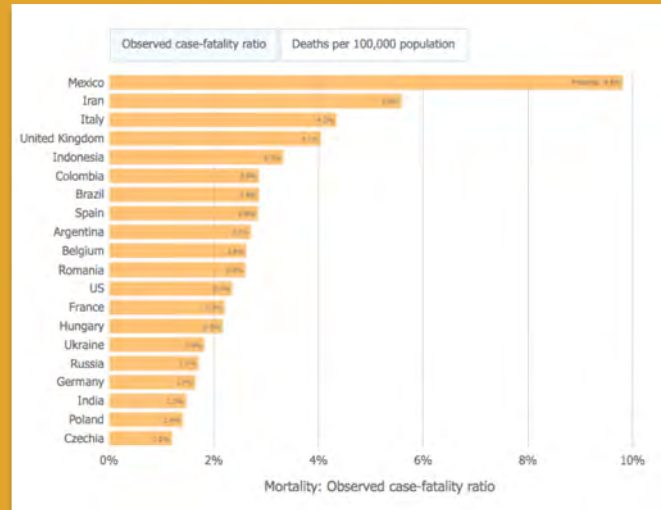
11/9/20



Cumulative Cases by Date



Worldwide Mortality



What's Happening Around the World – Selected Areas

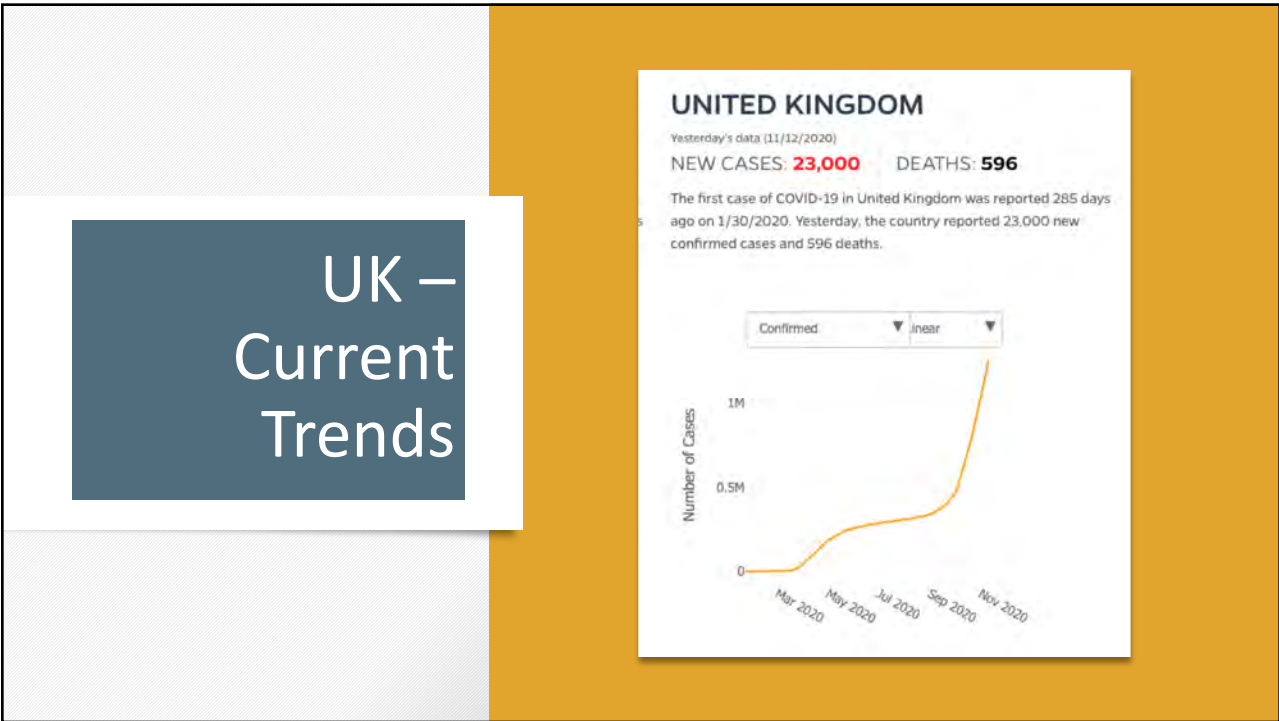
- England under toughest coronavirus restrictions yet
 - Hospitalizations continue to rise
- U.K. Prime Minister Boris Johnson announced a new month-long lockdown for England as COVID-19 cases surge across the country - Deaths could reach several thousand a day if the nation doesn't act
- CDC Travel Warning Level 3 - CDC recommends travelers reconsider travel to UK



Confirmed Cases
1,260,198

Deaths
50,457





What's Happening Around the World – Selected Areas

- Russia daily tallies of COVID-19 are at record highs
- CDC Travel Warning – Level 4 – Do Not Travel
- Moscow residents may get Russian vaccine next month
 - Creating a large network of vaccination room
 - Doctors & teachers already vaccinated
 - Researchers around the world: concern because of opaque development & lack of mass testing

Confirmed Cases

1,822,345

Deaths

31,326

Allergy
& Asthma
NETWORK
35TH ANNIVERSARY



What's Happening Around the World – Selected Areas

- Indonesia: recording the most cases and deaths in Southeast Asia
- Indonesia's Health Ministry collaborated with the COVID-19 Task Force to launch a program to bolster contact tracing efforts in the government-prioritized 51 districts and cities across 10 provinces in its COVID-19 prevention and mitigation endeavors
- CDC Travel Warning – Level 4 – Do Not Travel

Confirmed Cases

448,118

Deaths

14,836

What's Happening Around the World – Selected Areas

- Colombia: Colombia's lower house abruptly ended its session last week and asked lawmakers to quarantine after a member tested positive for coronavirus
- CDC Travel Warning Level 3 - CDC recommends travelers avoid all nonessential international travel to Colombia



Confirmed Cases
1,165,326

Deaths
33,312



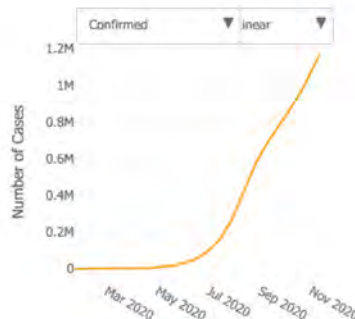
Colombia – Current Trends

COLOMBIA

Yesterday's data (11/12/2020)

NEW CASES: **9,970** DEATHS: **184**

The first case of COVID-19 in Colombia was reported 250 days ago on 3/5/2020. Yesterday, the country reported 9,970 new confirmed cases and 184 deaths.



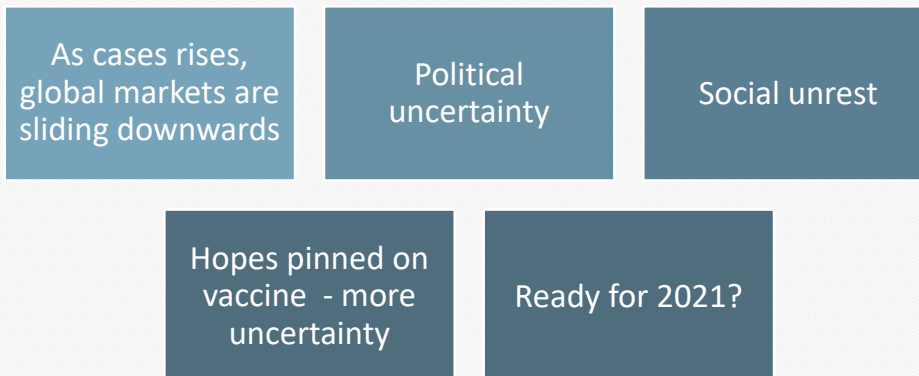
Air Pollution and COVID-19



- Exposure to air pollution increase the impact of respiratory diseases
 - COVID-19 is included in this category
- Need to tackle this double burden
- Bad quality of air is breathed in
 - Small particles affect lung health
 - Air pollution may make people with underlying conditions more vulnerable to COVID-19
 - May develop more serious disease
- Recommendations:
 - Practice prevention
 - In countries where air pollution is high – need to take action to reduce emissions



Global Markets Slide





Social Guidance – US & the World

Tonya Winders

From the CDC -

Social Distancing

Social distancing refers to the practice of keeping space between yourself and others to reduce the chance of contact with those who knowingly or unknowingly carry an illness.

To help stop the spread of coronavirus, health officials recommend avoiding large gatherings and maintaining a distance of 6 feet from other people.



From the CDC -



Can it be taken to the extreme?



Improv Everywhere, a comedic performance arts company, took it a few steps further, creating the "most socially distanced office" in New York City



Social Distancing

Harvard
School of
Public
Health

"Intermittent distancing may be required into 2022 unless critical care capacity is increased substantially or a treatment or vaccine becomes available"

"Even in the event of apparent elimination, SARS-CoV-2 surveillance should be maintained since a resurgence in contagion could be possible as late as 2024"

They are aware that such prolonged distancing, even if intermittent, would likely have "profoundly negative economic, social, and educational consequences"



CDC Director



Though coronavirus cases in the US have been soaring, social distancing appears to be effective

Social distancing is "one of the most powerful weapons" against COVID-19, said Robert Redfield, director of the Centers for Disease Control and Prevention



Holidays & Social Distancing



Dr. Fauci urged Americans to rethink their usual plans for Thanksgiving gatherings, citing increased coronavirus infections and hospitalizations in more than two dozen states around the country

He said that given the rise in cases, “we’ve really got to double down on fundamental public health measures that we talk about every day because they can make a difference.”



Poll Question

- **When do you expect social distancing restrictions to ease up?**
(your best guess . . .)

In Search of a Return to Normalcy – McKinsey Report

Two important definitions of an “end” to the pandemic -

An epidemiological end point when herd immunity is achieved

- Proportion of society immune to COVID-19 is sufficient to prevent widespread, ongoing transmission
- Vaccine = hope
- Public health emergency interventions no longer needed

A transition to a form of normalcy

- When almost all aspects of social and economic life can resume without fear of ongoing mortality (when a mortality rate is no longer higher than a country’s historical average)
- Long-term health consequences related to COVID-19



In Search of a Return to Normalcy – McKinsey Report

The "Next Normal"

- Might be different in surprising ways
- Getting there will be gradual
- Transition allows businesses & services to resume
 - Air travel, bustling shops, humming factories, full restaurants, and gyms operating at capacity



In Search of a Return to Normalcy – McKinsey Report

Timeline will vary by location

- Not reached in a linear fashion
- Epidemiological end? Most likely 3rd or 4th quarter of 2021
- Return to normalcy? Possibly in 1st or 2nd quarter of 2021

Beyond the impatience that most feel to resume normal life,

- The longer it takes to remove the constraints on our economies, the greater will be the economic damage



Questions?

*Please record your questions in the Question box on your
webinar control panel*

We will address as many questions as we can

Join us on **Thursday, December 3rd** for the 17th webinar in our COVID-19 Webinar Series -



COVID-19 & COPD: Coordinating Care

Vaccines, Social Guidance & Asthma: A Global Glance at COVID-19

Thank you for listening!
Get guidelines-based information at
allergyasthmanetwork.org